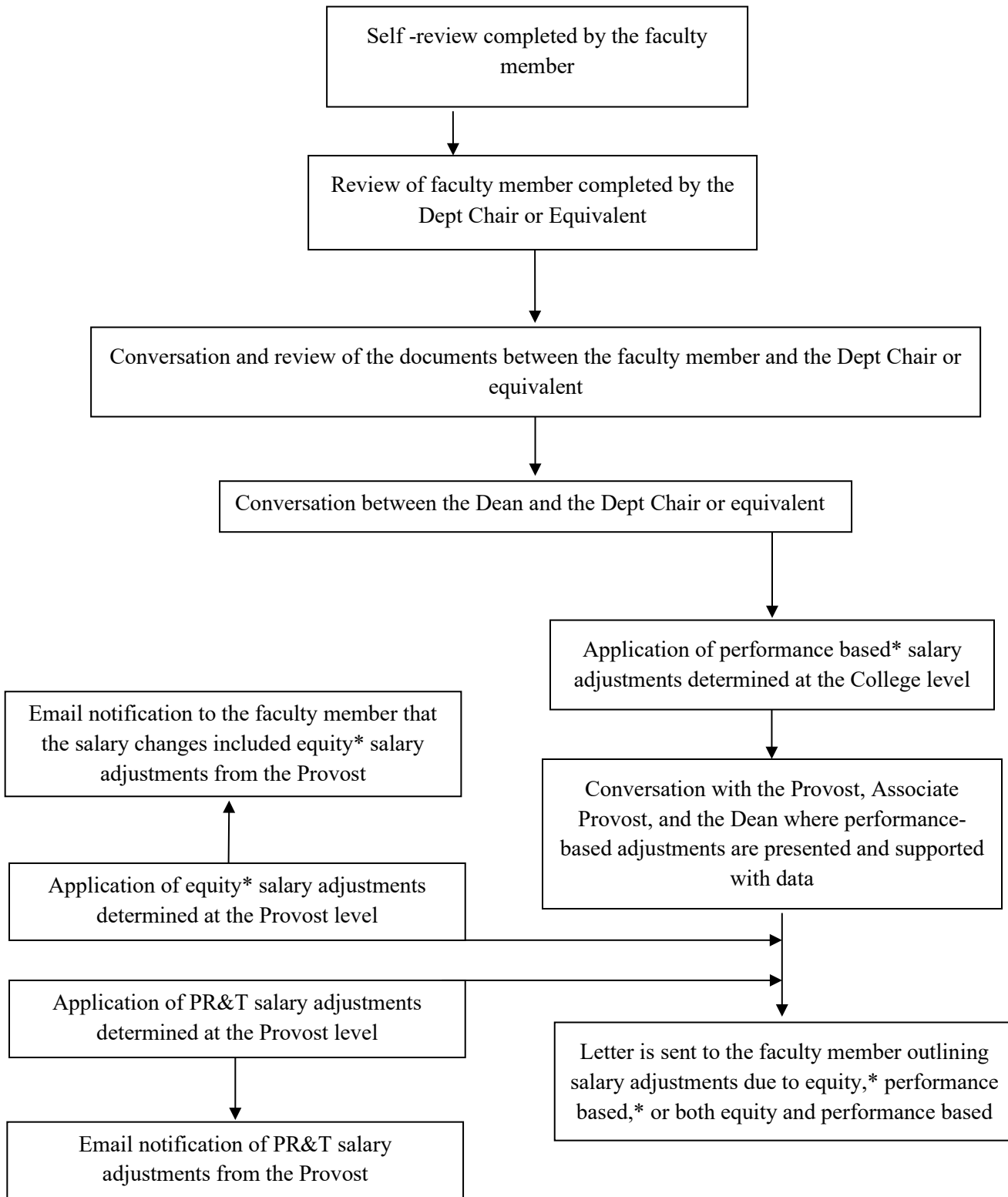


Flowchart for conversations regarding salary changes
(Fall 2023 approved)



***performance based salary adjustments:** monies distributed based on performance evaluations/annual review data that demonstrate a commendable actions (as defined by the unit’s annual review process/rubric) that exceed expectations of performance.

***equity salary adjustments:** impartial equality of compensation within the same discipline and rank that is not impacted by gender or race.

Internal equity: references an examination of the compensation for those faculty at SLU

External competitiveness: references an examination of the compensation at SLU against the benchmarked institutions